



LED track light

Solid and durable, good light transmission, even and gentle light output
Integrated design with attractive appearance and easy installation.
Lighting angle can be adjustable and meet the lighting request.
Quality aluminum body and top grade led chipset used.



Features:

- Classical and compact appearance
- A full power range of 10-35w
- Built-in LED round driver
- 4 beam angle options
- Durable housing with robust spindle
- Rotary@330°; Tilt@90°
- Stretched aluminum housing

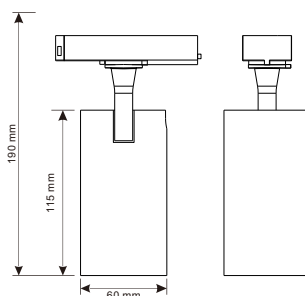
Applications:

- Widely used for meeting room.
- Shopping mall.
- Showroom.
- Supermarket.
- Hotel.
- Restaurant and so on places.

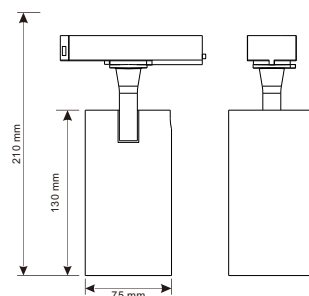


LED Track Light (LENS) Series

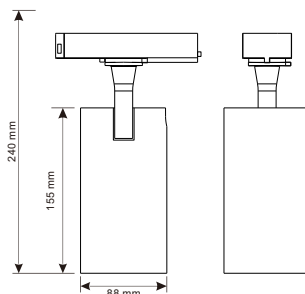
Dimension drawing:



L60/10-15W



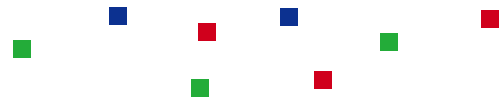
L75/20-25W



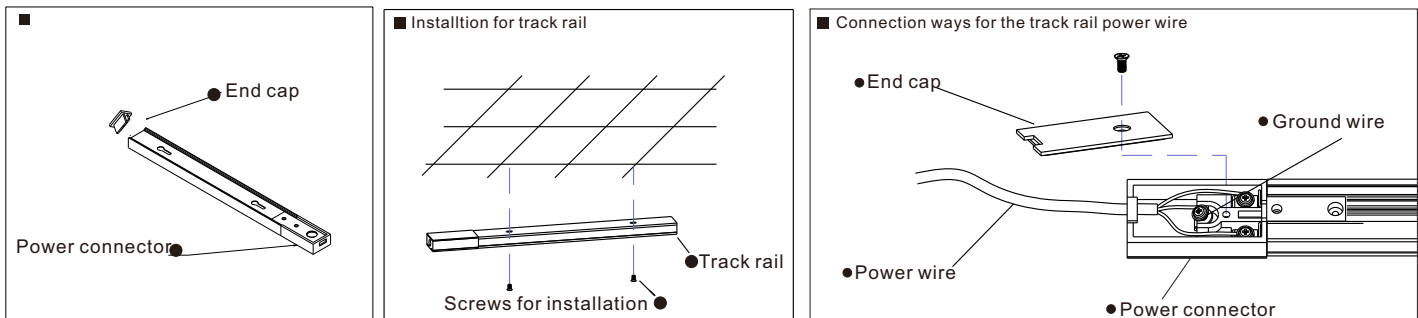
L88/28-35W



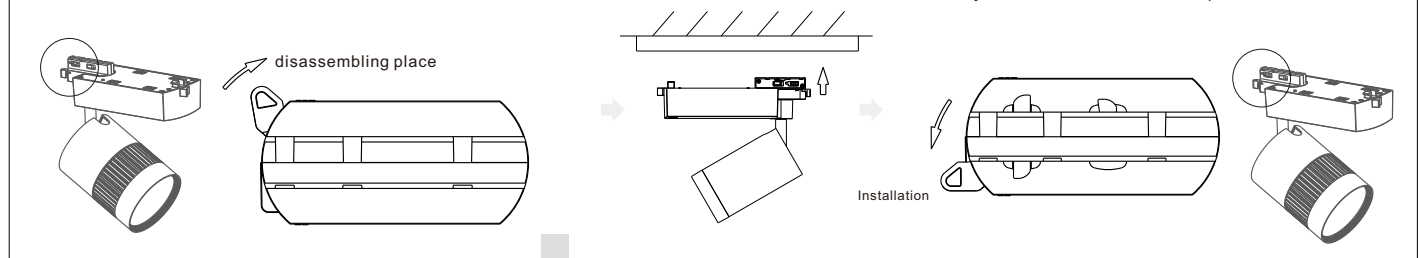
Part No of LED King	Power*(W)	CCT(K)	CRI	LUMEN*(LM)	BeamAngle(°)	Dimension(mm)	LED	Driver	Adaptor
L60/10-15W	10W 15W	2700K 3000K 4000K 6000K	≥90	800Lm 1200Lm	15° 24° 38° 60°	ø60*115mm	CREE COB	POWERGEAR	Stucchi Global
L75/20-25W	20W 25W	2700K 3000K 4000K 6000K	≥90	1600Lm 2000Lm	15° 24° 38° 60°	ø75*130mm	CREE COB	POWERGEAR	Stucchi Global
L88/28-35W	28W 35W	2700K 3000K 4000K 6000K	≥90	2200Lm 2800Lm	15° 24° 38° 60°	ø88*155mm	CREE COB	POWERGEAR	Stucchi Global



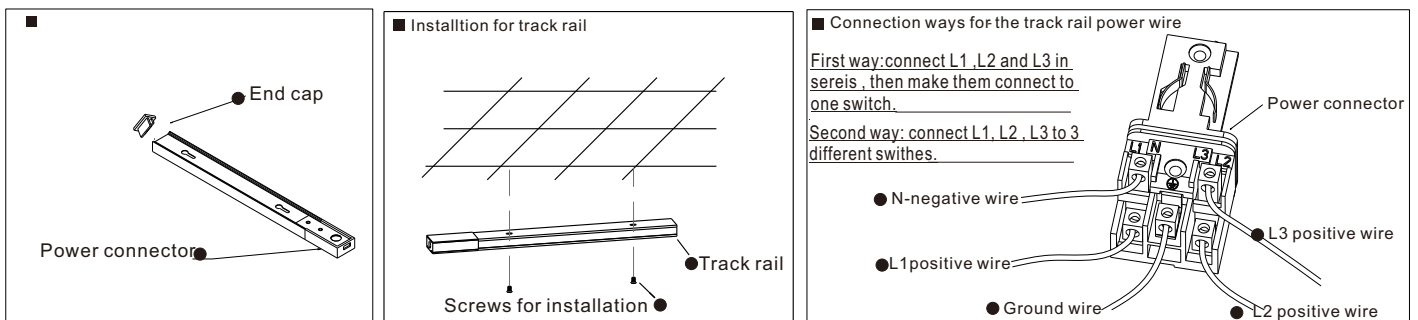
Installation method for Three circuit led track light



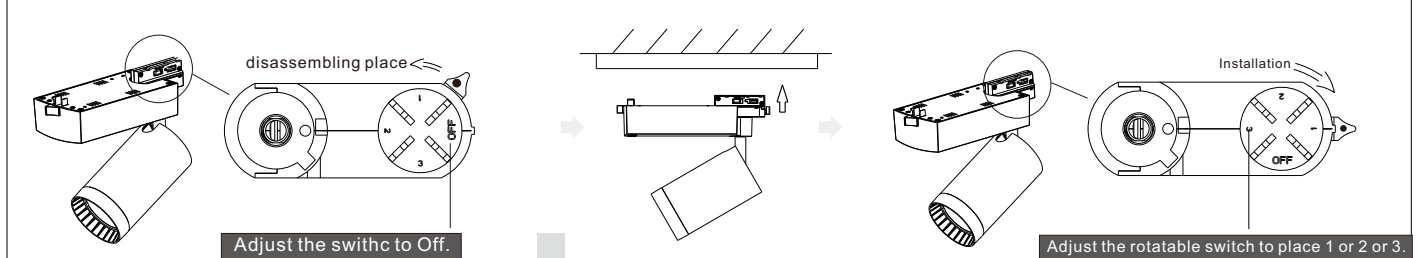
① Adjust the rotatable head to the disassembling place ② Make the seam click into the track rail. ③ Adjust the rotatable head to place for installation.



Installation method for Four circuit led track light



① Adjust the rotatable head to the disassembling place ② Make the seam click into the track rail. ③ Adjust the rotatable head to place for installation.



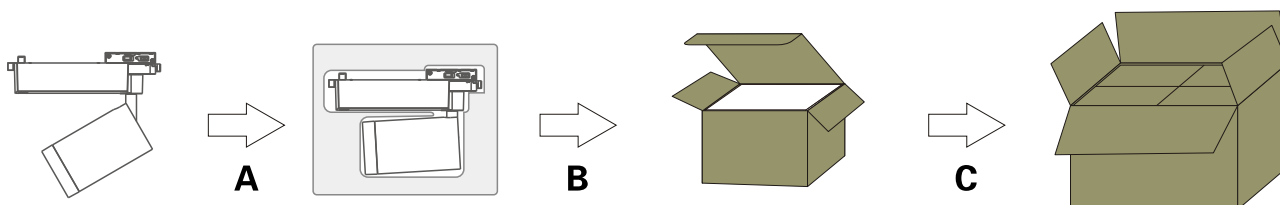
WARNING

1. Only for indoor lighting, no outdoor lighting or using under the condition of vibration, dust or high humidity. Or it will easily cause fire, electric shock or breakdown.
2. Power must be off before installation, cleaning, mending or replacement in case of electric shock or breakdown.
3. Please do not refit, add or change the accessories privately in case of shortening the lifespan or causing safety problems.
4. Distance between the lights and objects by illumination should be no less than 700mm.
5. Under no circumstances can lights be covered by cloth or other similar objects in case of fire or breakdown.
6. Once lights do not work properly, please turn off the power wire and get in contact with our agent or ask professional electrician to do the repairing in case of fire, falling or injury.



Packing Specification

Type	Lamp Zise	Net Weight	Qty	Gross Weight	Demension
L60/10-15W	ø60*115*190mm	1.54kg	6pcs	12.44kg	545x303x555mm
L75/20-25W	ø75*130*210mm	1.57kg	4pcs	8.08kg	562x303x447mm
L88/28-35W	ø88*155*240mm	1.57kg	4pcs	8.08kg	562x303x447mm



A: Put 1PCS track light on pearl cotton and then put into the inside box together.

B: Put pearl cotton on the track light.

C: Put inside box into the outer container .